



M600

M600W



Oxford with Stain-Release Styles

- 4 oz./yd² / 138gsm, 65% cotton, 35% polyester
- flat-felled seam finishing
- pearlized buttons with Harriton® logo

M600 prime

Harriton® Men's Long-Sleeve Oxford with Stain-Release

- button-down collar
- back yoke and back pleat
- left-chest pocket
- two-button adjustable cuffs

Sizes: XS, S, M, L, XL, 2XL, 3XL, 4XL, 5XL, 6XL

Colors: White, French Blue, Light Blue, Oxford Grey

M600W

Harriton® Ladies' Long-Sleeve Oxford with Stain-Release

- spread collar
- two-button adjustable cuffs

Sizes: XS, S, M, L, XL, 2XL, 3XL, 4XL

Colors: White, French Blue, Light Blue, Oxford Grey

M600S

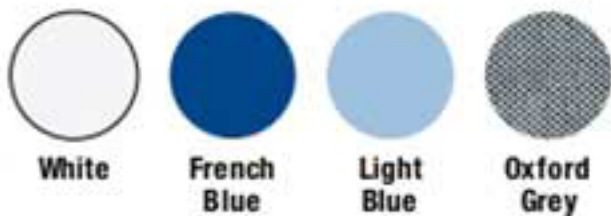
Harriton® Men's Short-Sleeve Oxford with Stain-Release

- button-down collar
- back yoke and back pleat
- left-chest pocket

Sizes: XS, S, M, L, XL, 2XL, 3XL, 4XL

Colors: White, French Blue, Light Blue, Oxford Grey

Swatches & features for all styles:





DEVON & JONES®

- Crisp, Moisture-Wicking Fine Shirting
- Cool-Touch Nylon Yarn Provides Superior Comfort
- Stretch Added for Enhanced Fit & Restriction-Free Movement
- Luxury, Comfort & Performance in One

CrownLux Performance™ Shirt Styles

- 3 oz./yd² / 100 gsm, 92% nylon, 8% spandex twill
- adjustable cuffs with button placket
- dyed-to-match pearlized buttons
- double layer, bias-cut back yoke

DG535 primeplus

Devon & Jones® Men's CrownLux Performance™ Tonal Mini Check Shirt

- hidden button-down collar

Sizes: S, M, L, XL, 2XL, 3XL, 4XL

Colors: Carbon, Graphite, Navy

DG535W

Devon & Jones® Ladies' CrownLux Performance™ Tonal Mini Check Shirt

- straight collar with built-in collar stays

Sizes: XS, S, M, L, XL, 2XL, 3XL

Colors: Carbon, Graphite, Navy

DG540 primeplus

Devon & Jones® Men's CrownLux Performance™ Micro Windowpane Shirt

- hidden button-down collar

Sizes: S, M, L, XL, 2XL, 3XL, 4XL

Colors: Burgundy/White, French Blue/White, Navy/White

DG540W prime

Devon & Jones® Ladies' CrownLux Performance™ Micro Windowpane Shirt

- straight collar with built-in collar stays

Sizes: XS, S, M, L, XL, 2XL, 3XL

Colors: Burgundy/White, French Blue/White, Navy/White

Features for all styles:



Navy/White

Navy

Burgundy/White

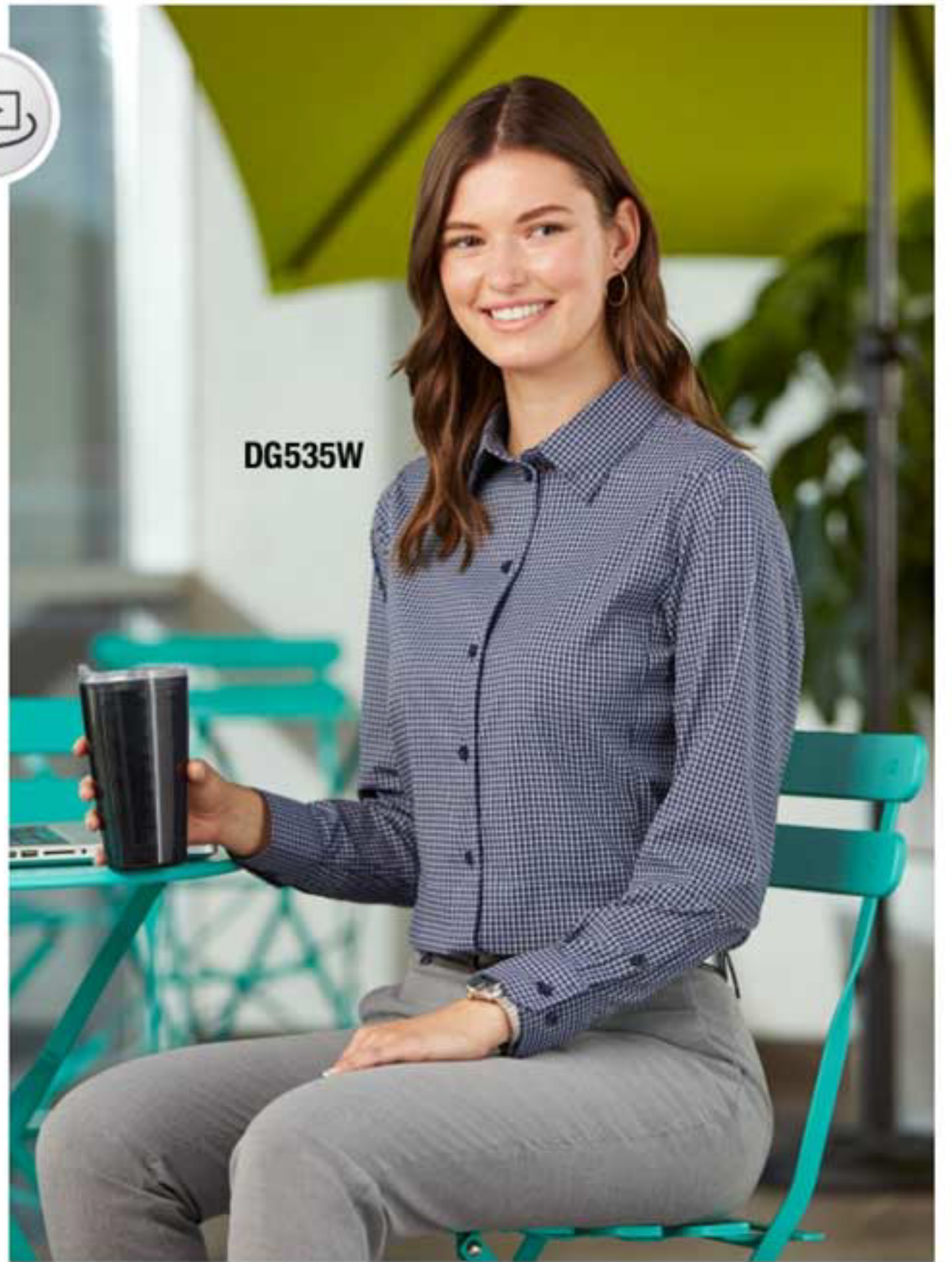
Carbon

French Blue/White

Graphite



DG535



DG535W



DG540



DG540W

UC500

UC500



ULTRACLUB®

Bradley Performance Woven Styles

- 4.5 oz./yd² / 158 gsm, 92% polyester, 8% spandex woven
- spread collar with collar stand
- dyed-to-match pearlized buttons
- side vents

UC500

UltraClub® Men's Bradley Performance Woven

- left-chest pocket

Sizes: S, M, L, XL, 2XL, 3XL, 4XL, 5XL

Colors: White, Black, Columbia Blue, Jade, Navy, Pacific Blue, Silver, Stone

UC500W

UltraClub® Ladies' Bradley Performance Woven

Sizes: XS, S, M, L, XL, 2XL, 3XL

Colors: White, Black, Columbia Blue, Jade, Navy, Pacific Blue, Silver, Stone



White



Black



Columbia
Blue



Jade



Navy



Pacific
Blue



Silver



Stone



MOISTURE
WICKING



STRETCH



ACTIVE
FIT



EASY
CARE

Tamiami™ II Shirt Styles

- 2.4 oz., 100% polyester ripstop fabric
- Omni-Wick™
- quick-dry
- Omni-Shade™ UPF 40 sun protection
- antimicrobial treatment protects against bacterial growth
- vented
- Columbia PFG logo patch on rod holder on left-chest
- embroidered Omni-Shade™ logo on upper left sleeve
- PFG logo patch on center back



OMNI-SHADE™
UPF 40 Sun Protection



OMNI-WICK™
High-Performance
Wicking Fabric

7253 primeplus

Columbia Men's Tamiami™ II Long-Sleeve Shirt

- button-down collar
- roll-up sleeves with tab holders

Sizes: S, M, L, XL, 2XL, 3XL

Colors: White, Cool Grey, Fossil, Gulf Stream, Sail, Vivid Blue

7278

Columbia Ladies' Tamiami™ II Long-Sleeve Shirt

- self-adhesive collar points
- snap buttons
- roll-up sleeves with tab holders
- side vents
- zippered hand pockets

Sizes: XS, S, M, L, XL, 1XL

Colors: XS-1XL available in White
XS-XL available in Clear Blue, White Cap Blue

7266 primeplus

Columbia Men's Tamiami™ II Short-Sleeve Shirt

- button-down collar

Sizes: S, M, L, XL, 2XL, 3XL

Colors: White, Cool Grey, Fossil, Gulf Stream, Sail, Vivid Blue

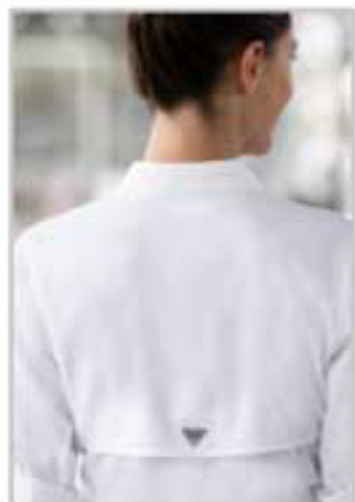
7277

Columbia Ladies' Tamiami™ II Short-Sleeve Shirt

- self-adhesive collar points
- snap buttons
- side and sleeve vents
- zippered hand pockets

Sizes: XS, S, M, L, XL, 1XL

Colors: XS-1XL available in White
XS-XL available in Clear Blue, White Cap Blue



Breathability vent
and PFG logo patch
(7278, 7277)



Breathability vent
and PFG logo patch
(7253, 7266)





7047



7313



7048

7314

Bahama Shirt Styles

- 3 oz., 100% Tactel® nylon taffeta Back Country Cloth
- quick-dry
- Omni-Shade™ UPF 30 sun protection
- button-down collar
- vented
- utility loop
- Columbia PFG logo patch on rod holder on left-chest
- PFG tags on left- and right-chest pockets
- PFG logo patch on center back



OMNI-SHADE®
UPF 30 Sun Protection

7047 primeplus

Columbia Men's Bahama™ II Short-Sleeve Shirt

- embroidered Omni-Shade™ logo on upper left sleeve

Sizes: S, M, L, XL, 2XL, 3XL

Colors: White, Cool Grey, Fossil, Gulf Stream, Sail, Vivid Blue

7313

Columbia Ladies' Bahama™ Short-Sleeve Shirt

Sizes: XS, S, M, L, XL, 1XL

Colors: White, Clear Blue, White Cap Blue

7314

Columbia Ladies' Bahama™ Long-Sleeve Shirt

- roll-up sleeves with tab holders

Sizes: XS, S, M, L, XL, 1XL

Colors: White, Clear Blue, White Cap Blue

7048 primeplus

Columbia Men's Bahama™ II Long-Sleeve Shirt

- roll-up sleeves with tab holders
- embroidered Omni-Shade™ logo on upper left sleeve

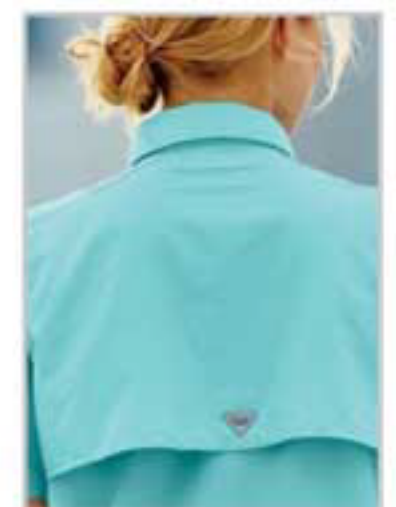
Sizes: S, M, L, XL, 2XL, 3XL

Colors: White, Cool Grey, Fossil, Gulf Stream, Sail, Vivid Blue

Swatches for all styles:



Breathability vent and PFG logo patch (7047, 7048)



Breathability vent and PFG logo patch (7313, 7314)

Columbia products purchased must be sold only with embellishment and cannot be resold in a retail environment. Sale of Columbia on the internet or elsewhere without embellishment is strictly forbidden. Failing to comply with these policies will result in loss of privileges for selling the Columbia brand.



7130



breathability vent & PFG logo patch

7130 primeplus

Columbia Men's Bonehead™ Short-Sleeve Shirt

- 3.8 oz., 100% cotton poplin
- self-adhesive collar points
- vented
- utility loop
- Columbia PFG logo patch on rod holder on left-chest
- PFG logo patch on center back

Sizes: S, M, L, XL, 2XL, 3XL

Colors: White, Fossil, Gulf Stream, Vivid Blue, Whitecap



White Fossil Gulf Stream Vivid Blue Whitecap

Columbia products purchased must be sold only with embellishment and cannot be resold in a retail environment. Sale of Columbia on the internet or elsewhere without embellishment is strictly forbidden. Failing to comply with these policies will result in loss of privileges for selling the Columbia brand.



1577761



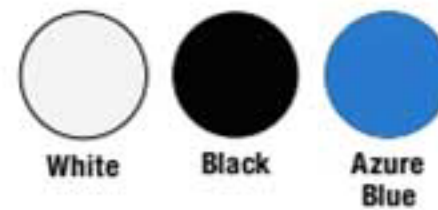
1577761

Columbia Men's Utilizer Short-Sleeve Shirt

- ripstop 100% polyester
- Omni-Wick™
- quick-dry
- Omni-Shade™ UPF 40 sun protection
- antimicrobial treatment protects this product from bacterial growth
- vented
- multi-functional pockets

Sizes: S, M, L, XL, 2XL, 3XL, 4XL

Colors: White, Black, Azure Blue



OMNI-SHADE™
UPF 40 Sun Protection



OMNI-WICK™
High-Performance
Wicking Fabric

42100

42100

**Marmot Men's Aerobora
Short-Sleeve Woven**

- 3.4 oz., 100% polyester AirExchange plain weave stretch
- AirExchange performance fabric
- packable, breathable and lightweight
- ultraviolet protection factor (UPF) 25
- stretch
- quick-drying and wicking
- durable flat-felled seams

Sizes: S, M, L, XL, 2XL

Colors: Artic Navy, Cinder, Desert Khaki



Artic Navy



Cinder



Desert Khaki



62220

62220

**Marmot Men's Elridge
Short-Sleeve Woven**

- 4.2 oz., 77% polynosic rayon, 15% recycled polyester, 8% polyester plaid
- upcycle product made with recycled polyester
- soft, sanded, midweight woven fabric
- ultraviolet protection factor (UPF) 20
- durable flat-felled seams with contrast interior stitch
- straight hem and single-patch pocket

Sizes: S, M, L, XL, 2XL

Colors: Artic Navy, Steel Onyx



Artic Navy



Steel Onyx



42110

42110

**Marmot Men's Aerobora
Long-Sleeve Woven**

- 3.4 oz., 100% polyester AirExchange plain weave stretch
- AirExchange performance fabric
- packable, breathable and lightweight
- ultraviolet protection factor (UPF) 25
- stretch
- quick-drying and wicking
- durable flat-felled seams

Sizes: S, M, L, XL, 2XL

Colors: Artic Navy, Cinder, Desert Khaki



Artic Navy



Cinder



Desert Khaki



Marmot Mountain products purchased must be sold only with embellishment. Sale of Marmot Mountain on the internet or elsewhere without embellishment is strictly forbidden (excludes those items designated as closeout/clearance). Failing to comply with these policies will result in loss of privileges for selling the Marmot Mountain brand.



S17019

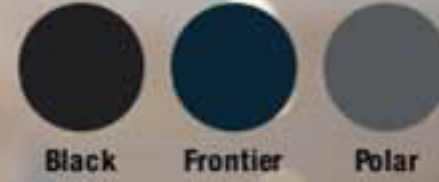
S17019

Spyder Men's Stryke Short-Sleeve Woven Shirt

- dress up or dress down comfortable, stylish 70% cotton, 26% nylon, 4% spandex textured fabric
- Spyder branded collar stays
- forward set shoulder seams
- Spyder branded buttons
- secure stylized front pocket to match Spyder brand aesthetic
- iconic Spyder bug logo flag label at pocket
- woven Spyder label on center front placket
- Spyder bug logo sticker included on hang tag

Sizes: S, M, L, XL, 2LX, 3XL

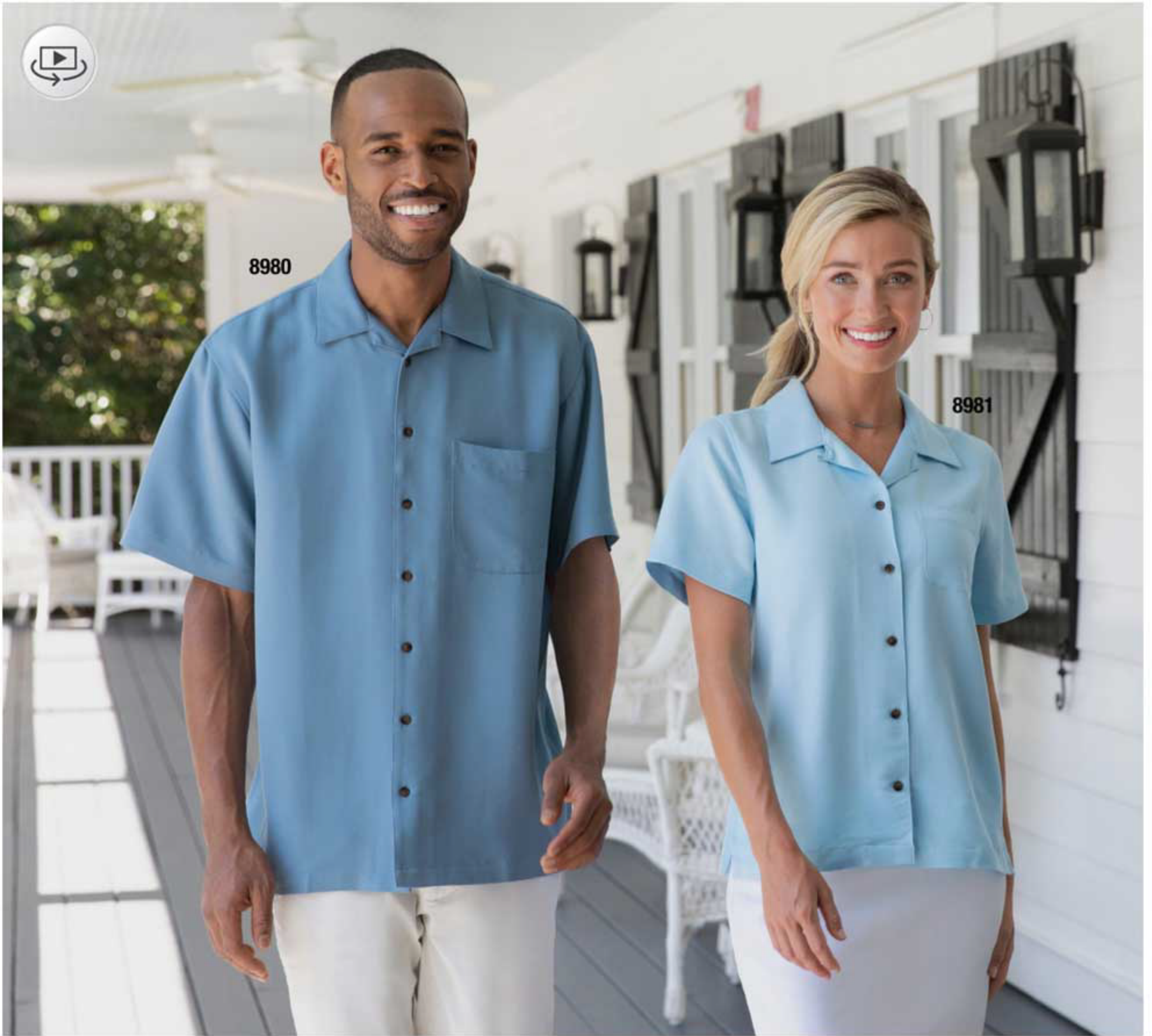
Colors: Black, Frontier, Polar



Black

Frontier

Polar



ULTRACLUB®

Cabana Breeze Camp Shirt Styles

- 5.5 oz./yd² / 186 gsm, 60% rayon, 40% polyester sand-washed microfiber
- square bottom
- side vents

8980 **prime**

UltraClub® Men's Cabana Breeze Camp Shirt

Sizes: S, M, L, XL, 2XL, 3XL, 4XL, 5XL, 6XL

Colors: S-6XL available in Black, Banana, Brick, Island Blue, Navy, Sage, Stone, Wedgewood
S-4XL available in White

8981

UltraClub® Ladies' Cabana Breeze Camp Shirt

Sizes: XS, S, M, L, XL, 2XL, 3XL

Colors: Black, Banana, Brick, Island Blue, Sage, Stone, Wedgewood



White



Black



Banana



Brick



Island Blue



Navy



Sage



Stone



Wedgewood



EASY CARE



M560

M560W

Barbados Textured Camp Shirt Styles

- 4.5 oz./yd² / 160 gsm, 70% rayon, 30% polyester polynosic
- sand-washed for softness
- full-button front
- synthetic coconut shell buttons

M560W prime

Harriton® Ladies' Barbados Textured Camp Shirt

Sizes: XS, S, M, L, XL, 2XL, 3XL

Colors: Black, Cloud Blue, Crème, Khaki, Navy, Nectarine, Palm Green, Parrot Red, Pineapple, Pool Blue

M560 prime

Harriton® Men's Barbados Textured Camp Shirt

- left-chest pocket
- side vents

Sizes: XS, S, M, L, XL, 2XL, 3XL, 4XL, 5XL, 6XL

Colors: Black, Cloud Blue, Crème, Khaki, Navy, Nectarine, Palm Green, Parrot Red, Pineapple, Pool Blue





M575 prime

Harriton® Men's Two-Tone Bahama Cord Camp Shirt

- 5.5 oz./yd² / 186 gsm, 66% rayon, 34% polyester pieced bedford cord
- contrast front panels
- full-button front
- dyed-to-match buttons

Sizes: S, M, L, XL, 2XL, 3XL, 4XL

Colors: Black/Crème, Cloud Blue/Crème, Green Mist/Crème, Navy/Crème



Bahama Cord Camp Shirt Styles

- 5.5 oz./yd² / 186 gsm, 66% rayon, 34% polyester pieced bedford cord
- full-button front
- synthetic coconut shell buttons

M570 prime

Harriton® Men's Bahama Cord Camp Shirt

- left-chest pocket

Sizes: S, M, L, XL, 2XL, 3XL, 4XL

Colors: Black, Cloud Blue, Crème, Green Mist, Navy, Sand, Tile Red

M570W

Harriton® Ladies' Bahama Cord Camp Shirt

Sizes: S, M, L, XL, 2XL

Colors: Black, Blush, Cloud Blue, Crème, Green Mist, Navy, Sand, Tile Red



Features for all styles:



M575



M570



M570W

